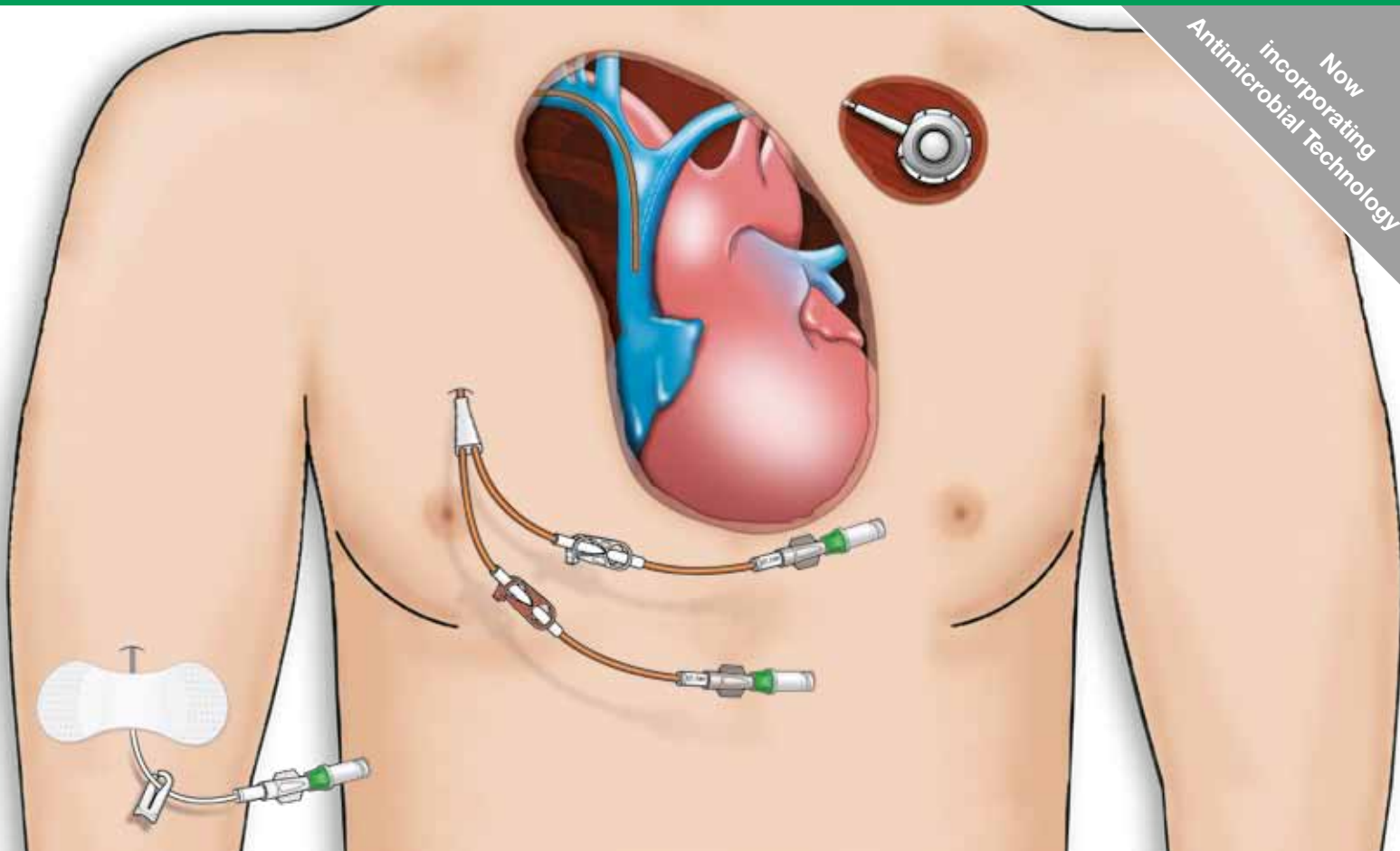


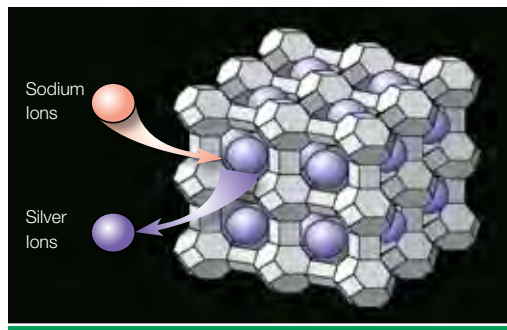
Leaderflex, Lifecath and Sitimplant

Integrated Product Solutions for Mid to Long Term Vascular Access

Now incorporating Antimicrobial Technology



Maximum Sterile Barrier



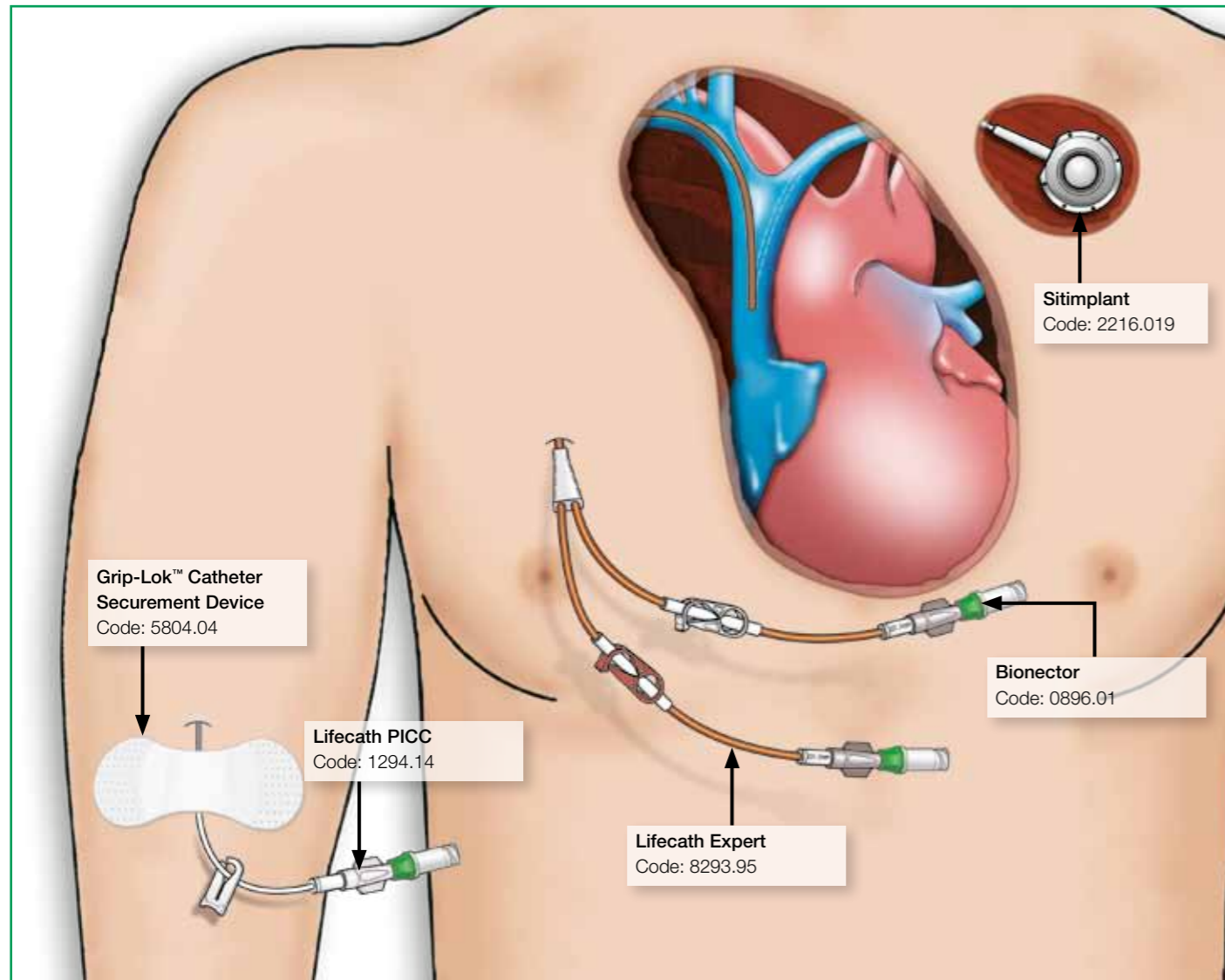
Agion Antimicrobial Technology



Lifecath Expert

Mid to Long Term Vascular Access

Integrated Product Solutions



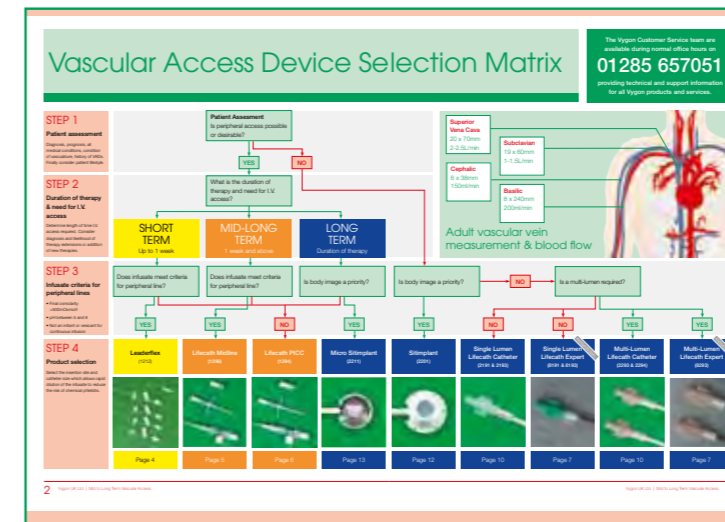
Child to Adult

The Vygon family of mid to long term vascular access devices provides safe and reliable vascular access for all patients from child to adult.

Vascular Access

Vygon specialise in vascular access devices made from the next generation of biostable polyurethane and soft traditional silicone. Whilst silicone catheters remain soft and pliable throughout implantation, catheters made from polyurethane have the advantage of providing extra stiffness to aid insertion and then become soft and pliable at body temperature. The next generation of biostable polyurethane offers enhanced resistance to alcohol and stress-related damage, making them suitable for long term implantation. Vygon have now included the Agion antimicrobial technology throughout our range of Expert catheters for both short and long term use.

The product selection matrix on pages 2 and 3 (below) has been designed as a guide for correct product selection from 9 families of central venous catheters containing over 40 product variations to ensure an optimal match between patient and catheter.



- 1. Peripheral & central venous vascular assessment.** Consider the diagnosis, prognosis, all medical conditions, condition of vasculature which may prevent vascular access e.g. complications from prolonged and repeated peripheral cannulation. Finally consider patient lifestyle.
- 2. If peripheral access is possible and/or preferred, consider the duration of therapy.** Importantly, consider the likelihood of therapy extension or additional therapies as prolonged and repeated I.V. cannulation is time consuming and unpleasant for the patient.
- 3. Consider the infusate criteria for peripheral lines.** Final osmolarity <500 mOsmol/l; pH between 5 & 8; and not an irritant or vesicant for continuous infusion.
- 4. Product selection.** Select the insertion site and catheter size which allows rapid dilution of the infusate to reduce the risk of chemical phlebitis. For the complete product specification please refer to the product page specified.

Contents

Vascular Access Device Selection Matrix 2

Product Information

- Leaderflex 4
- Lifecath Midline 5
- Lifecath PICC 6
- Lifecath Expert Antimicrobial 7
- Antimicrobial: A Real Need 8
- Antimicrobial: A Real Answer 9
- Lifecath 10
- Standard and Mini Sitimplant 12
- Micro Sitimplant 13
- Sitimplant **NEW** 14
- Mini Sitimplant **NEW** 15
- Sitimplant Accessories 16

Complementary Products

- Grip-Lok™ Catheter Securement Device **NEW** 18
- PICC Insertion Pack 19
- Micro Seldinger Kit 20
- Ultrasound Probe Cover & Gel 21
- CVC Insertion Pack 22
- Multicath Expert Antimicrobial 23

Other Information

- Education and Training 24
- References 25

Vascular Access Device Selection Matrix

The Vygon Customer Service team are available during normal office hours on **01285 657051** providing technical and support information for all Vygon products and services.

STEP 1

Patient assessment

Diagnosis, prognosis, all medical conditions, condition of vasculature, history of VADs. Finally consider patient lifestyle.

Patient Assessment
Is peripheral access possible or desirable?

YES

NO

STEP 2

Duration of therapy & need for I.V. access

Determine length of time I.V. access required. Consider diagnosis and likelihood of therapy extensions or addition of new therapies.

What is the duration of therapy and need for I.V. access?

SHORT TERM
Up to 1 week

MID-LONG TERM
1 week and above

LONG TERM
Duration of therapy

STEP 3

Infusate criteria for peripheral lines

- Final osmolarity <500mOsmol/l
- pH between 5 and 8
- Not an irritant or vesicant for continuous infusion

Does infusate meet criteria for peripheral line?

Does infusate meet criteria for peripheral line?

Is body image a priority?

Is body image a priority?

Is a multi-lumen required?

YES

YES

NO

YES

YES

NO

NO

YES

YES

STEP 4

Product selection

Select the insertion site and catheter size which allows rapid dilution of the infusate to reduce the risk of chemical phlebitis.

Leaderflex
(1212)

Lifecath Midline
(1296)

Lifecath PICC
(1294)

Micro Sitimplant
(2211)

Sitimplant
(2201)

Single Lumen Lifecath Catheter
(2191 & 2193)

Single Lumen Lifecath Expert
(8191 & 8193)

Multi-Lumen Lifecath Catheter
(2293 & 2294)

Multi-Lumen Lifecath Expert
(8293)



Page 4

Page 5

Page 6

Page 13

Page 12

Page 10

Page 7

Page 10

Page 7

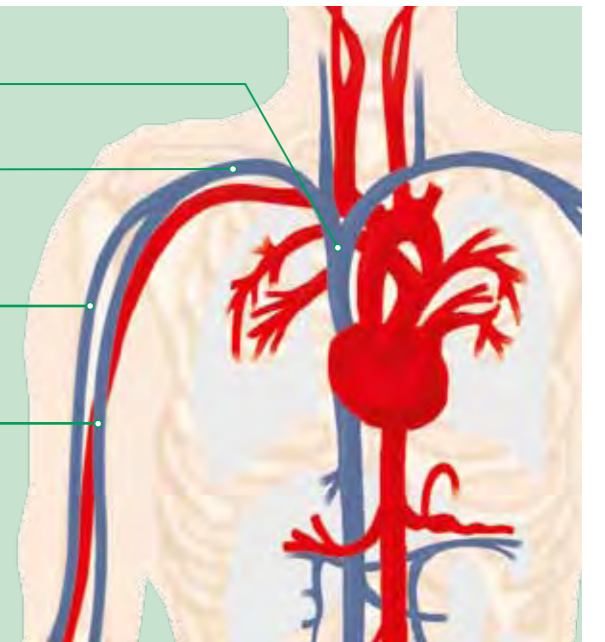
Superior Vena Cava
20 x 70mm
2-2.5L/min

Subclavian
19 x 60mm
1-1.5L/min

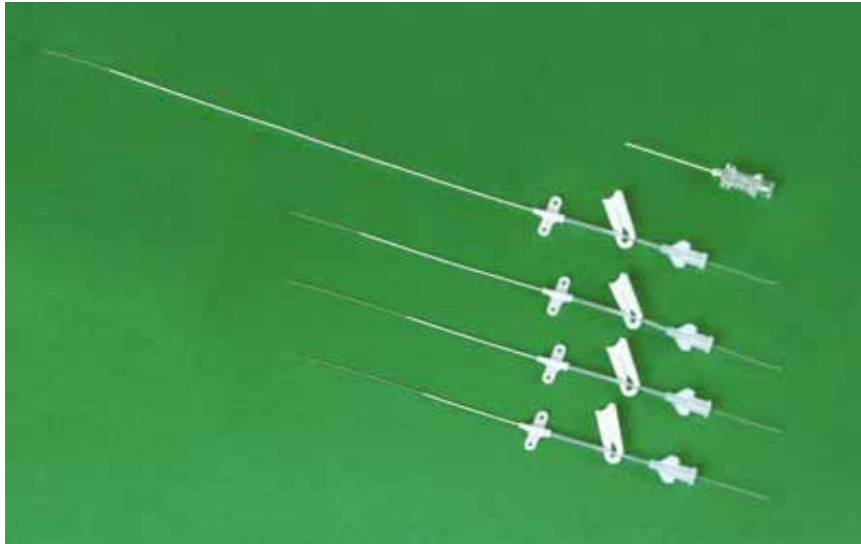
Cephalic
6 x 38mm
150ml/min

Basilic
8 x 240mm
200ml/min

Adult vascular vein measurement & blood flow



Short Term IV Catheter 4, 6, 8 & 20cm



The Leaderflex family of 22 gauge midline catheters offers superior insertion and indwelling characteristics. Safety features include a slide clamp for safe line changes, a clear integral extension to aid air bubble detection and reinforcement of the catheter/wing junction to help minimise the risk of catheter kinking. Line management is also improved by moving hub manipulation away from the insertion site, thereby reducing the risk of mechanical phlebitis, which can result in premature catheter removal.

"Leaderflex is manufactured from modern polyurethane which offers superior insertion and indwell characteristics."

Features and Benefits

Modern polyurethane catheter

enhances stay time

One piece catheter construction

simplifies insertion

Flexible guidewire

reduces risk of vein trauma

Integral extension

reduces hub manipulation from the site of entry

Primary wing

provides secure catheter fixation

Secure clamp

ensures safe line changes

Short 4, 6 and 8cm line

for I.V. catheterisation

20cm length

for midline placement

X-ray opaque catheter

for confident tip positioning without additional contrast medium

Ordering Information

Product Codes		Catheter Information						Guidewire Length (cm)	Extension Length (cm)	Unit of Sale
Vygon	NPC	Product Description	Size (G)	Length (cm)	Flow Rate (ml/min)*	ID - OD (mm)				
1212.04	FSQ326	Polyurethane catheter with integral extension	22	4	17.0	0.5 - 0.7	24	4.5	20	
1212.06	FSQ327	Polyurethane catheter with integral extension	22	6	15.0	0.5 - 0.7	24	4.5	20	
1212.08	FSQ328	Polyurethane catheter with integral extension	22	8	12.0	0.5 - 0.7	26	4.5	20	
1212.20	FSQ329	Polyurethane catheter with integral extension	22	20	4.4	0.5 - 0.7	50	10.0	20	

*Tested to ISO 10555

Mid Term IV Catheter 25cm



Features and Benefits

Soft thin-wall catheter

firm during insertion, softens at body temperature, which aids insertion, and maximises flow rate and patient comfort

Depth marked 25cm catheter

aids accurate tip placement

Removable stylet

for ease of insertion

Integral extension

limits catheter movement and the risk of phlebitis

Temporary T-Piece flush port

aids advancement through venous valves

Supplied with Bionector

provides safe, needle-free access

Short peelable cannula introducer

provides the additional safety and security of advancing the catheter through plastic

Grip-Lok™ Catheter Securement Device

is flexible and low-profile for maximum patient comfort

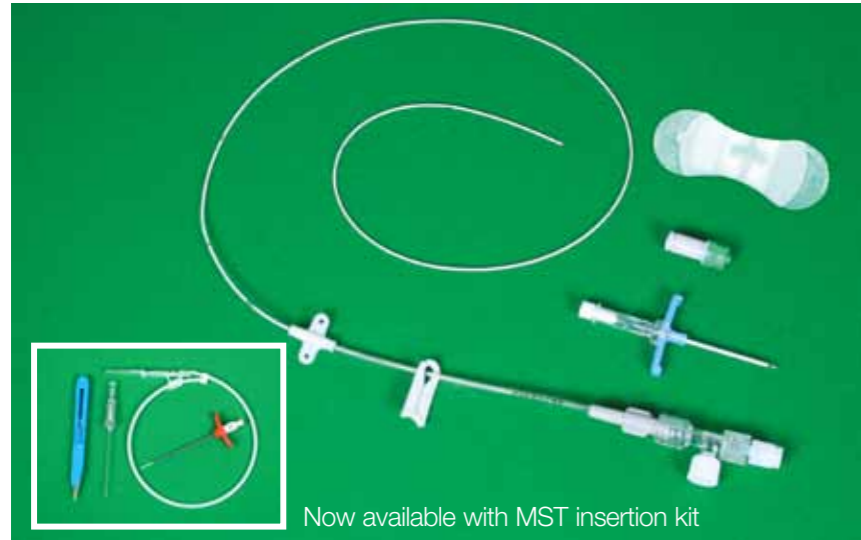
special adhesive holds the catheter securely in place, preventing dislodgement and migration

Ordering Information

Product Codes		Lumen	Catheter Information				Flow Rate (ml/min)*	Priming Volume (ml)	Cannula Introducer Gauge	Unit of Sale	MST Introducer Order Code
Vygon	NPC		Product Description	Size (Fr)	Length (cm)	OD (mm)					
1296.13	FSU177	Single	X.R.O. Catheter (PUR)	3.0	25	1.0	4.4	0.30	17	10	G1146.037
1296.14	FSU178	Single	X.R.O. Catheter (PUR)	4.0	25	1.3	20.7	0.38	15	10	G1146.047
1296.15	FSU179	Single	X.R.O. Catheter (PUR)	5.0	25	1.7	70.0	0.46	14	10	G1146.057
1296.245	FSU180	Double	X.R.O. Catheter (PUR)	4.5	25	1.5	7.4 7.4	0.17 0.17	14	10	G1146.457

*Tested to ISO 10555

Mid to Long Term IV Catheter 60cm



Now available with MST insertion kit

Lifecath PICC is intended for use in patients who require mid-long term IV therapy. It may be used to administer fluids, antibiotics, chemotherapy, and pain management drugs. The catheter is suitable for use with volumetric pump infusors and syringe drivers, provided that the maximum continuous infusion pressures are controlled below 21.75psi (1.5bar, 1,140mmHg).

Features and Benefits

Soft thin wall catheter

firm during insertion, soft at body temperature, which aids insertion, maximises flow rate & patient comfort

Depth marked 60cm catheter

aids accurate tip placement

Removable stylet

provides added stiffness during insertion

Integral extension

limits catheter movement and the risk of phlebitis

Temporary T-Piece flush port

aids advancement through venous valves

Supplied with Bionector

provides safe needle-free access

Short peelable cannula introducer or MST insertion kit

provides the additional safety and security of advancing the catheter through plastic

Grip-Lok™ catheter securement device

is flexible and low-profile for maximum patient comfort

special adhesive holds the catheter securely in place, preventing dislodgement and migration

Kit Contents

- 1 x Polyurethane catheter
- 1 x Grip-Lok™
- 1 x Peelable cannula introducer
- 1 x MST insertion kit (codes 1294.113, 1294.114, 1294.115, 1294.345 only)
- 1 x Bionector

Ordering Information

Product Codes		Catheter Information					Flow Rate (ml/min)*	Priming Volume (ml)	Cannula Introducer Gauge	Unit of Sale	MST Introducer Order Code
Vygon	NPC	Lumen	Product Description	Size (Fr)	Length (cm)	OD (mm)					
1294.13	FSU304	Single	Lifecath PICC	3.0	60	1.0	1.3	0.25	17	10	G1146.037
1294.14	FSU305	Single	Lifecath PICC	4.0	60	1.3	9.4	0.55	15	10	G1146.047
1294.15	FSU306	Single	Lifecath PICC	5.0	60	1.7	32.0	0.70	14	10	G1146.057
1294.245	FSU307	Double	Lifecath PICC	4.5	60	1.5	3.5/3.5	0.32/0.32	14	10	G1146.457
1294.113	FSU370	Single	Lifecath PICC & MST	3.0	60	1.0	1.3	0.25	-	10	-
1294.114	FSU371	Single	Lifecath PICC & MST	4.0	60	1.3	9.4	0.55	-	10	-
1294.115	FSU372	Single	Lifecath PICC & MST	5.0	60	1.7	32.0	0.70	-	10	-
1294.345	FSU373	Double	Lifecath PICC & MST	4.5	60	1.5	3.5/3.5	0.32/0.32	-	10	-

A Silver Integrated, Long Term Cuffed Silicone Catheter



Features and Benefits

Antimicrobial silicone

reduces the risk of catheter-related infections

Lumen size printed on each pigtail

for easy identification

Subcutaneous cuff

provides security and reduces the risk of bacterial migration

Reinforced clamping areas

reduce the risk of catheter damage

Choice of plastic or metal tunnelling rod

for user preference

Secondary fixation wing

for extra security

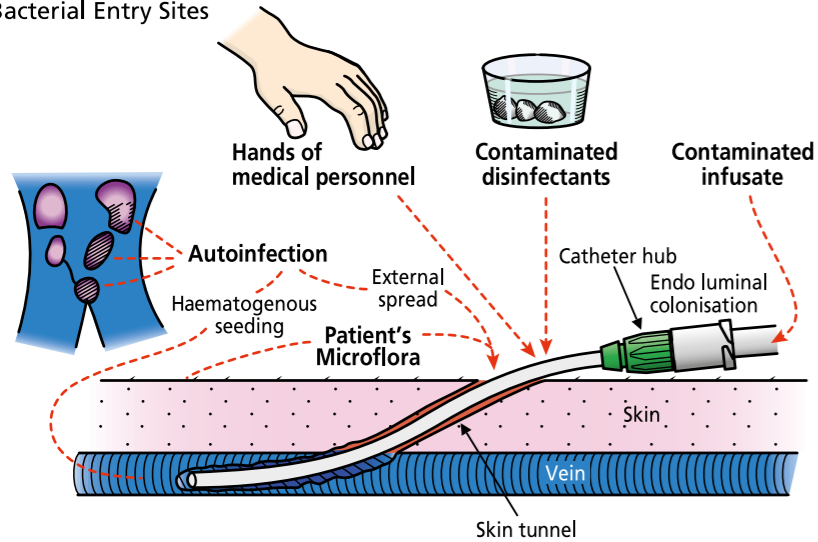
Lifecath Expert offers the first silver integrated, long term cuffed silicone catheter. The slow release of silver ions from the inner and outer surfaces over extended periods ensures long term protection from the most common pathogens that cause device related infections, including gram-negative, gram-positive and fungi.

Ordering Information

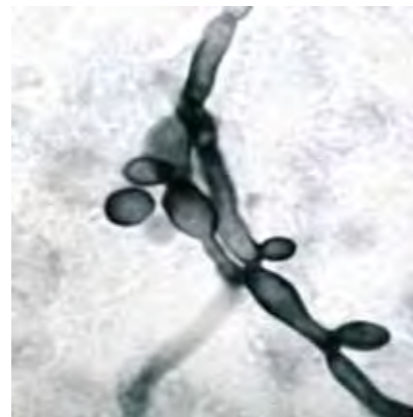
Product Codes		Product Description	Size (Fr)	OD - ID (mm)	Flow Rate (ml/min)	Priming Volume (ml)	Length (mm)	Tip Bifurcation Length (mm)	Tip - Cuff Length (mm)	Pigtail Repair Kit Code	Complete Repair Kit Code
Vygon	NPC										
Cut-Down Trays											
8191.42	-	Single lumen	4.2	1.4 / 0.7	5	0.35	750	N/A	500	8194.42	N/A
8191.66	FSU236	Single lumen	6.6	2.2 / 1.1	27	1.10	900	N/A	550	8194.66	N/A
8293.070	-	Double lumen	7.0	2.35 / 0.6/1.0	2 / 15	0.70 / 1.10	920	720	570	8195.06 / 8195.10	8295.07
8293.095	FSU247	Double lumen	9.5	3.0 / 1.3/1.3	37 / 37	1.30 / 1.30	920	720	570	8195.13 / 8195.13	8295.95
8193.96	FSU239	Single lumen	9.6	3.2 / 1.6	60	1.65	900	N/A	550	8195.96	N/A
8293.110	-	Double lumen	11.0	3.75 / 1.0/1.6	25 / 80	1.30 / 2.20	920	720	570	8195.10 / 8195.16	8295.11
Percutaneous Kits											
8191.425	-	Single lumen	4.2	1.4 / 0.7	5	0.35	750	N/A	500	8194.42	N/A
8191.667	FSU237	Single lumen	6.6	2.2 / 1.1	27	1.10	900	N/A	550	8194.66	N/A
8293.70	-	Double lumen	7.0	2.35 / 0.6/1.0	2 / 15	0.70 / 1.10	920	720	570	8195.06 / 8195.10	8295.07
8293.95	FSU249	Double lumen	9.5	3.0 / 1.3/1.3	37 / 37	1.30 / 1.30	920	720	570	8195.13 / 8195.13	8295.95
8193.960	FSU242	Single lumen	9.6	3.2 / 1.6	60	1.65	900	N/A	550	8195.96	N/A
8293.11	-	Double lumen	11.0	3.75 / 1.0/1.6	25 / 80	1.30 / 2.20	920	720	570	8195.10 / 8195.16	8295.11

A Real Need

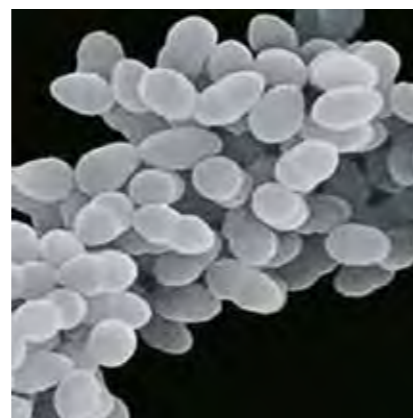
Bacterial Entry Sites



Staphylococcus



E-Coli



Candida

Every day we are confronted with regular, recurring exposure to bacteria, fungi and other microbes that threaten our health and well-being.

The press continues to make us aware of the growing health concerns caused by resistant bacteria and infections in hospitals.

Catheter-related bloodstream infections can be caused by cutaneous micro-organisms that contaminate the catheter during insertion or migrate along the catheter track when the catheter is in situ. Micro-organisms from the hands of healthcare workers can also contaminate and colonise the catheter hub during care interventions.²

The causes of bloodstream infections:

Staphylococcus

Gram-positive bacteria are implicated in more than 50% of infections.³

E-Coli

Gram-negative bacteria are implicated in 25% to 33% of infections.³

Candida

Fungi species are implicated in 5% to 7% of infections.³

CATHETER-RELATED BLOODSTREAM INFECTIONS...

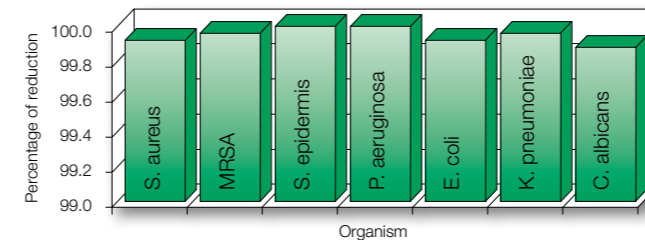
...6000 Cases A Year reported in the UK¹

A Real Answer

In Vivo study... KHARE, et al. 2004, 44TH ANNUAL INTERSCIENCE CONFERENCE ON ANTIMICROBIAL AGENTS AND CHEMOTHERAPY, WASHINGTON DC

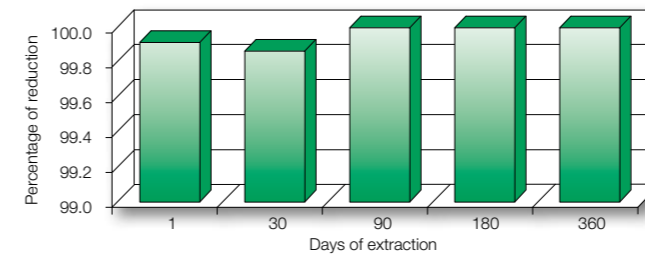
An evaluation of silver impregnated catheters in adult intensive care units. In 246 CVC insertions over a 14 month period, tip colonisation was significantly lower in the silver impregnated catheters compared to standard polyurethane catheters.⁴

In Vitro study... Antimicrobial activity comparison: DOW SHAKER ASSAY TEST for 24 hours with LIFECATH EXPERTTM



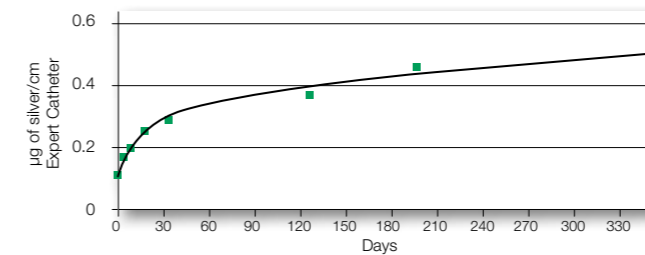
Expert catheters are proven to be effective against the most common pathogens causing device-related infections, including gram-negative and gram-positive bacteria and fungi.

In Vitro study... Antimicrobial activity comparison: DOW SHAKER ASSAY TEST for 1 year, with Staph. aureus for LIFECATH EXPERT



The antimicrobial activity of Lifecath Expert is long lasting. After 360 days the catheters are still effective.

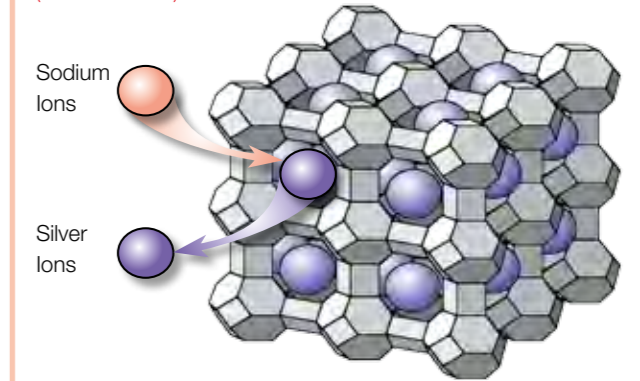
In Vitro study... 1 year silver release rate for: LIFECATH EXPERT



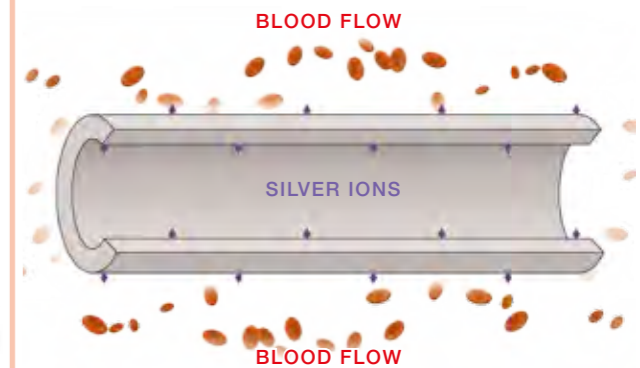
Silver ions are released very slowly from the catheter's inner and outer surfaces over an extended period of time, ensuring long term protection.

Antimicrobials: How it Works

Lattice structure of the Zeolite (aluminosilicate)



The active ingredient used in Vygon's Expert technology is the patented Agion antimicrobial. Agion is an inorganic compound of elemental silver, which is the active ingredient, ionically bound to an inert ceramic material. The unique Agion antimicrobial delivery system is impregnated throughout the catheter, ensuring a regulated, slow release of silver ions delivering long term protection.



Electrolytes in the body fluids interact with the ionic silver, which causes a controlled release at a slow and steady rate that effectively maintains an antimicrobial micro-environment throughout the catheter's inner and outer surfaces.

Long Term Cuffed Silicone Catheter



Lifecath is available as a cut-down tray or percutaneous kit, depending upon clinical preference.

Percutaneous Kit Contents

- 1 x Cuffed radio-opaque silicone catheter
- 1 x Depth marked guidewire "J" tipped
- 1 x Desilet peelable locking introducer
- 1 x Scalpel
- 1 x Seldinger wire
- 1 x Injection membranes(s)
- 1 x Introducer needle
- 1 x Tunnelling rods



Pigtail repair kit



Complete catheter repair kit

9.5Fr double lumen Lifecath product code 2293.095

A well balanced catheter offering superior performance ideal for multiple infusion therapy.



12.5Fr triple lumen Lifecath product code 2294.125

A high performance catheter designed for patients undergoing intensive therapy requiring multiple infusions.



Features and Benefits

Extensive range from neonate to adult
to meet all your clinical requirements

Choice of cut-down tray or percutaneous kit
offers clinical preference

Lumen size printed on each pigtail
aids identification

Smooth overmoulded bifurcation
reduces risk of clotting and is soft next to the patient's skin

Latex-free injection membranes
for convenience & safety

Soft radio-opaque silicone
offers high biocompatibility & aids catheter tip verification

Subcutaneous cuff
provides security and reduces the risk of bacterial migration

Colour coded hubs
for quick line identification

Ability to cut to length
enables variable tunnel lengths

Reinforced pigtails
reduce risk of premature breakage

Convenient clamps
for single handed application

Ordering Information

Vygon Code	NPC Code	Size (Fr)	Catheter OD (mm)	Lumen ID (mm)	Flow Rate (ml/min)	Priming Volume (ml)	Hub Colour	Overall Length (mm)	Tip Bifurcation Length (mm)	Tip-Cuff Length (mm)	Desilet Introducer	Pigtail Repair Kit	Complete Catheter Repair Kit
Lifecath Cut-Down Trays													
Lifecath Catheter Cut-Down Tray - Cuffed silicone single lumen catheter supplied with malleable tunnelling rod & latex-free injection membrane(s).													
2191.27	FSU113	2.7	1.00	0.50	1	0.25	●	750	N/A	500	G1146.037	2194.27	N/A
2191.42	FSU114	4.2	1.40	0.70	5	0.35	●	750	N/A	500	1146.05	2194.42	N/A
2191.50	FSU116	5.0	1.70	0.95	15	0.70	●	750	N/A	500	1146.06	2194.50	N/A
2191.66	FSU118	6.6	2.20	1.10	18	1.10	●	750	N/A	500	1146.07	2194.66	N/A
Single Lumen Lifecath Cut-Down Tray - Cuffed silicone single lumen catheter supplied with malleable tunnelling rod & latex-free injection membrane(s).													
2193.96	FSU120	9.6	3.20	1.60	60	1.65	●	900	N/A	550	1146.10	2195.96	N/A
Double Lumen Lifecath Cut-Down Tray - Cuffed silicone double lumen catheter supplied with latex-free injection membrane.													
2293.070	FSU122	7.0	2.35	0.60 1.00	2 15	0.70 1.10	● ●	920	720	570	1146.08	2195.06 2195.10	2295.07
2293.090	FSU123	9.0	3.00	0.70 1.30	5 35	0.70 1.60	● ●	920	720	570	1146.10	2195.07 2195.13	2295.09
2293.095	FSU124	9.5	3.00	1.30 1.30	37 37	1.30 1.30	● ●	920	720	570	1146.10	2195.13 2195.13	2295.95
2293.110	FSU126	11.0	3.75	1.00 1.60	25 80	1.30 2.20	● ○	920	720	570	1146.12	2195.10 2195.16	2295.11
2293.140	FSU128	14.0	4.45	1.60 1.60	80 80	2.20 2.20	○ ○	920	720	570	1146.14	2195.16 2195.16	2295.14
Lifecath Percutaneous Kits													
Lifecath Percutaneous Kit Cuffed silicone, single lumen catheters supplied with malleable tunnelling rod, peelable sheath introducer, Seldinger needle & wire, blade & latex-free injection membrane(s).													
2191.425	FSU115	4.2	1.40	0.70	5	0.35	●	750	N/A	500	N/A	2194.42	N/A
2191.506	FSU117	5.0	1.70	0.95	15	0.70	●	750	N/A	500	N/A	2194.50	N/A
2191.667	FSU119	6.6	2.20	1.10	18	1.10	●	900	N/A	500	N/A	2194.66	N/A
Lifecath Single Lumen Percutaneous Kit Cuffed silicone, single lumen catheters supplied with malleable tunnelling rod, peelable sheath introducer, Seldinger needle & wire, blade & latex-free injection membrane(s).													
2193.960	FSU121	9.6	3.20	1.60	60	1.65	●	900	N/A	550	N/A	2195.96	N/A
Lifecath Double Lumen Percutaneous Kit Cuffed silicone, double lumen catheters supplied with malleable tunnelling rod, peelable sheath introducer, Seldinger needle & wire, blade & latex-free injection membrane(s).													
2293.70	FSU129	7.0	2.35	0.60 1.00	2 15	0.70 1.10	● ●	920	720	570	N/A	2195.06 2195.10	2295.07
2293.90	FSU173	9.0	3.00	0.70 1.30	5 35	0.70 1.60	● ●	920	720	570	N/A	2195.07 2195.13	2295.09
2293.95	FSU130	9.5	3.00	1.30 1.30	37 37	1.30 1.30	● ●	920	720	570	N/A	2195.13 2195.13	2295.95
2293.11	FSU125	11.0	3.75	1.00 1.60	25 80	1.30 2.20	● ○	920	720	570	N/A	2195.10 2195.16	2295.11
2293.14	FSU127	14.0	4.45	1.60 1.60	80 80	2.20 2.20	○ ○	920	720	570	N/A	2195.16 2195.16	2295.14
Lifecath Triple Lumen Percutaneous Kit Cuffed silicone, triple lumen catheters supplied with malleable tunnelling rod, peelable sheath introducer, Seldinger needle & wire, blade & latex-free injection membrane(s).													
2294.125	FSU175	12.5	4.16	1.00 1.00 1.50	25 25 80	0.90 0.90 1.90	○ ○ ○	900	700	570	N/A	2195.10 2195.10 2195.16	2298.125

All NPC codes are single items, for quantity breaks please refer to the NHS logistics catalogue.

Silicone Encased Titanium Implantable Port



Sitimplant is available with a choice of attached or detached catheter options

Features and Benefits

- Lightweight port**
for maximum patient comfort
- Soft radio-opaque silicone outer casing**
compatible with MRI & CT imaging
- Titanium inner casing**
gouge resistant which prevents damage to the inner casing
- High performance silicone membrane**
for maximum needle retention & durability
- Contoured septum**
aids port location for safe needle access
- Atraumatic connecting sleeve**
prevents catheter kinking
- Depth marked 60cm soft traditional silicone catheter**
for accurate catheter tip location
- 10Fr catheter option**
suitable for high flow applications
- 3Fr catheter option**
suitable for paediatrics

Port Specification Standard Sitimplant

- High density silicone septum
- Minimum 1,300 punctures
- Weight 11g
- Priming volume 0.51ml
- Height 13.5mm
- Overall diameter 32mm

Port Specification Mini Sitimplant

- High density silicone septum
- Minimum 630 punctures
- Weight 4.3g
- Priming volume 0.29ml
- Height 10.5mm
- Overall diameter 23mm

Ordering Information

Vygon Code	NPC Code	Product Description	Catheter ID - OD (mm)	Catheter Gauge (Fr)	Total Priming Volume (ml)	Catheter Length (cm)
Standard Sitimplant (Adult)						
2201.33	FSQ344	Percutaneous kit with detached catheter	1.1 - 2.2	7	1.11	60
2201.47	FSQ346	Percutaneous kit with detached catheter	1.6 - 3.2	10 (High flow)	1.61	60
2201.32	-	Cut-down tray with integral catheter	1.1 - 2.2	7	1.11	60
2201.42	-	Cut-down tray with integral catheter	1.6 - 3.2	10 (High flow)	1.61	60
Mini Sitimplant						
2201.63	FSQ350	Percutaneous kit with detached catheter	1.1 - 2.2	7	0.89	60
2201.65	FSQ351	Cut-down tray with detached catheter (with Desilet introducer 1146.04)	0.8 - 1.3	3	0.59	60
2201.61	FSQ348	Cut-down tray with detached catheter (with Desilet introducer 1146.08)	1.1 - 2.2	7	0.89	60
2201.66	FSQ354	Cut-down tray with integral catheter (with Desilet introducer 1146.04)	0.8 - 1.3	3	0.59	60
2201.62	FSQ349	Cut-down tray with integral catheter (with Desilet introducer 1146.08)	1.1 - 2.2	7	0.89	60

Titanium Implantable Port



Micro Sitimplant delivers all of the safety and security advantages of an implantable port with the lowest possible profile in order to maintain a positive patient body image.

Features and Benefits

- Stable base**
prevents port wobble
- Lightweight titanium port**
keeps the profile as low as possible
- Soft biocompatible silicone catheter**
for extended dwell time
- Depth marked silicone catheter**
for accurate tip placement
- Choice of catheter size**
for either arm or chest placement
- Excellent radiopacity**
even with small catheter diameter
- Gouge resistant titanium chamber**
resists needle damage
- Contoured septum**
for reliable port location
- Atraumatic safety collar**
prevents catheter kinking
- High performance silicone membrane**
for maximum needle retention
- Supplied with a Huber type needle & Bionector**
for safe, needle-free access

Port Specification Micro Sitimplant

- High density silicone septum
- Minimum 500 punctures
- Weight 3.5g
- Priming volume 0.17ml
- Height 8mm
- Overall diameter 19mm

Ordering Information

Vygon Code	NPC Code	Product Description	Catheter ID - OD (mm)	Catheter Gauge (Fr)	Total Priming Volume (ml)	Catheter Length (cm)
2211.67	FSQ356	Micro Sitimplant with detachable catheter kit	1.1 - 2.2	6.6	0.7	80
2211.68	FSQ357	Micro Sitimplant with integral catheter kit	1.1 - 2.2	6.6	0.7	80
2211.77	FSQ359	Micro Sitimplant with detachable catheter kit	0.8 - 1.3	3.2	0.4	80
2211.78	FSQ360	Micro Sitimplant with integral catheter kit	0.8 - 1.3	3.2	0.4	80

Titanium Implantable Port



Low-profile titanium implantable port with large septum to facilitate location by palpation and puncture of the septum. For the larger patient.

Port Specification

Standard Sitimplant

- High density silicone septum
- Minimum 1,300 punctures
- Weight 10.5g
- Priming volume 0.47ml
- Height 11mm
- Overall diameter 28mm

Ordering Information

Vygon Code	NPC Code	Product Description	Catheter ID - OD (mm)	Catheter Gauge (Fr)	Total Priming Volume (ml)	Catheter Length (cm)
2216.019	-	Cut-down tray with detached catheter	1.6 - 3.2	9.6	1.67	60
2216.119	-	Percutaneous kit with detached catheter	1.6 - 3.2	9.6	1.67	60
2216.029	-	Cut-down tray with integral catheter	1.6 - 3.2	9.6	1.67	60
2216.129	-	Percutaneous kit with integral catheter	1.6 - 3.2	9.6	1.67	60
2216.216	-	Percutaneous kit with detached catheter	1.2 - 2.0	6.0	1.15	60
2216.016	-	Cut-down tray with detached catheter	1.1 - 2.2	6.6	1.07	60
2216.116	-	Percutaneous kit with detached catheter	1.1 - 2.2	6.6	1.07	60
08 2216.116	-	Percutaneous kit with detached catheter, drapes and gowns	1.1 - 2.2	6.6	1.07	60
2216.026	-	Cut-down tray with integral catheter	1.1 - 2.2	6.6	1.07	60
2216.126	-	Percutaneous kit with integral catheter	1.1 - 2.2	6.6	1.07	60

Features and Benefits

Lightweight port

for maximum patient comfort

Titanium casing

gouge resistant which prevents damage to the inner casing
compatible with MRI & CT imaging

High performance silicone membrane

for maximum needle retention & durability

Contoured septum

aids port location for safe needle access

Atraumatic connecting sleeve

prevents catheter kinking

Depth marked 60cm soft traditional silicone catheter

for accurate catheter tip location

Mini Titanium Implantable Port



Low-profile titanium implantable port with large septum to facilitate location by palpation and puncture of the septum. Suitable for all patients.

Port Specification

Mini Sitimplant

- High density silicone septum
- Minimum 630 punctures
- Weight 8g
- Priming volume 0.27ml
- Height 10mm
- Overall diameter 24mm

Ordering Information

Vygon Code	NPC Code	Product Description	Catheter ID - OD (mm)	Catheter Gauge (Fr)	Total Priming Volume (ml)	Catheter Length (cm)
2215.019	-	Cut-down tray with detached catheter	1.6 - 3.2	9.6	1.47	60
2215.119	-	Percutaneous kit with detached catheter	1.6 - 3.2	9.6	1.47	60
2215.129	-	Percutaneous kit with integral catheter	1.6 - 3.2	9.6	1.47	60
2215.216	-	Percutaneous kit with detached catheter	1.2 - 2.0	6.0	0.95	60
2215.016	-	Cut-down tray with detached catheter	1.1 - 2.2	6.6	0.87	60
2215.116	-	Percutaneous kit with detached catheter	1.1 - 2.2	6.6	0.87	60
08 2215.116	-	Percutaneous kit with detached catheter, drapes and gowns	1.1 - 2.2	6.6	0.87	60
2215.026	-	Cut-down tray with integral catheter	1.1 - 2.2	6.6	0.87	60
2215.126	-	Percutaneous kit with integral catheter	1.1 - 2.2	6.6	0.87	60
2215.014	-	Cut-down tray with detached catheter	0.8 - 1.3	3.9	0.57	60
2215.024	-	Cut-down tray with integral catheter	0.8 - 1.3	3.9	0.57	60

Features and Benefits

Lightweight port

for maximum patient comfort

Titanium casing

gouge resistant which prevents damage to the inner casing
compatible with MRI & CT imaging

High performance silicone membrane

for maximum needle retention & durability

Contoured septum

aids port location for safe needle access

Atraumatic connecting sleeve

prevents catheter kinking

Depth marked 60cm soft traditional silicone catheter

for accurate catheter tip location

Hubsite, Inject-Site, Desilet and Perfusafe

Hubsite

Infusion device with Huber type bevel for implantable ports.



Ordering Information

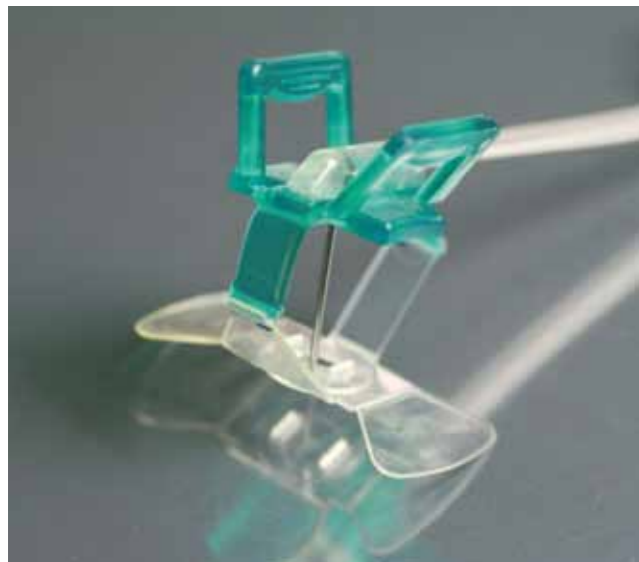
Vygon Code	Length (mm)	OD (mm)	G	Hub Colour
1239.715	15	0.7	22	●
1239.720	20	0.7	22	●
1239.725	25	0.7	22	●
1239.730	30	0.7	22	●
1239.915	15	0.9	20	●
1239.920	20	0.9	20	●
1239.925	25	0.9	20	●
1239.930	30	0.9	20	●
1239.115	15	1.0	19	●
1239.120	20	1.0	19	●
1239.125	25	1.0	19	●
1239.130	30	1.0	19	●
1239.59	20	0.9	20	Bionector

Huber type needle curved to 90° with wings and flexible polyurethane extension tube (length 30cm) with clamp. Presented in a rigid blister pack.

Perfusafe

Safety infusion device with Huber type bevel for implantable ports.

Perfusafe prevents needle-stick injuries caused by the rebound effect when withdrawing a Huber needle from an implantable port. The needle is automatically directed into a safety block offering total protection for healthcare workers. Flexible polyurethane tube (length 30cm) with clamp. Perfusafe is supplied with a removal protection pad which is available separately sterile under code 5801.01.



Ordering Information

Vygon Code	Length (mm)	OD (mm)	G	Hub Colour
1249.715	15	0.7	22	●
1249.720	20	0.7	22	●
1249.725	25	0.7	22	●
1249.730	30	0.7	22	●
1249.915	15	0.9	20	●
1249.920	20	0.9	20	●
1249.925	25	0.9	20	●
1249.930	30	0.9	20	●
1249.115	15	1.0	19	●
1249.120	20	1.0	19	●
1249.125	25	1.0	19	●
1249.130	30	1.0	19	●

Desilet

Catheter introducer with peel-away sheath.



Ordering Information

Vygon Code	For Catheter		Sheath	
	Fr	OD (mm)	Length (mm)	ID - OD (mm)
1146.04*	04	1.3	7	1.4 - 1.95
1146.05	05	1.7	14	1.8 - 2.30
1146.06	06	2.0	14	2.1 - 2.60
1146.07	07	2.3	14	2.4 - 3.10
1146.08	08	2.7	14	2.8 - 3.40
1146.09	09	3.0	14	3.1 - 3.70
1146.10	10	3.3	14	3.4 - 4.10
1146.12	12	4.0	14	4.1 - 4.70
1146.14	14	4.6	14	4.8 - 5.40

Kit Contents

1 x Introducer needle - Length 70mm
- ID - 1.06mm x OD - 1.26mm

1 x 'J' Guidewire - Length 53cm
- OD - 0.97mm

1 x Desilet with peel-apart sheath
1 x 10ml Syringe

Inject-Site

Needle (straight or pre-shaped to 90°) with Huber type bevel for injections into implantable ports.



Ordering Information

Vygon Code		Length (mm)	OD (mm)	G
Straight	Pre-shaped to 90°			
-	1058.07	20	0.7	22
1057.27	1058.27	25	0.7	22
-	1058.09	20	0.9	20
1057.29	1058.29	25	0.9	20

Catheter Securement Device



Grip-Lok™ is a flexible low-profile PICC and Midline catheter securement device specifically designed for maximum patient comfort.

✓ Simple

Grip-Lok™ is applied in the same simple manner as a bandage, and can be easily placed and adjusted.

✓ Cost Effective

Engineered for durability, Grip-Lok™ holds better than tape and helps prevent dislodgement and migration. This reduces the risk of lost lines, and the associated catheter replacement costs.

✓ Versatile

Grip-Lok™ can be used with Vygon Lifecath PICCs, Midlines, Leaderflex and other winged catheters.

Features and Benefits

Hypoallergenic tape
reduces the risk of rashes and skin irritation
allows the patient's skin to breathe

Unique design
easy to apply and adjust with gloved hands
flexible for maximum patient comfort

Specialised adhesive
holds Grip-Lok™ firmly in position, reducing the risk of catheter dislodgement and migration

Self-gripping fastener
secures the catheter in place, and allows for easy removal

Pre-cut foam insert
ensures correct catheter positioning

Low-profile
ensuring maximum patient comfort



Ordering Information

Vygon Code	NPC Code	Unit of Sale
5804.04	ELW238	50

Ensuring Maximum Sterile Barrier Protection



The Vygon PICC insertion pack fulfills the current epic2 and High Impact Interventions No.1 guidelines for central catheter placement, offering a large sterile base and patient drapes to minimise the risk of accidental catheter contamination. Vygon also offers a customisation service that allows you to create an insertion pack to accommodate your own procedural requirements.

Kit Contents

1 x Tray	1 x VENE-K tourniquet
3 x Green prep forceps	1 x ChlorPrep® 3ml applicator
2 x Syringes 10ml	15 x Swabs 7.5 x 7.5cm, 8ply
1 x 6 Steristrip sutures	1 x Outer wrap
1 x Filter straw	1 x PICC underarm drape 75 x 90cm
1 x Pair of scissors	1 x Aperture drape 100 x 100cm with adhesive
1 x Yellow disposal bag	

Ordering Information

Vygon Code	NPC Code	Product Description	Unit of Sale
0P0199688PH	FSU181	PICC insertion pack	10

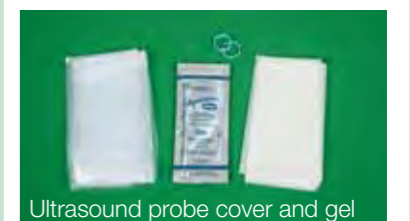


Customised PICC Insertion Packs provide the option of designing a particular pack to fit with the specific needs of the Clinician.

Please ask your local Sales Executive for more information.

Customisation of Packs

Example items which can be added to your pack to fit with the specific needs of the clinician.



Micro Seldinger (MST) Kit

SHORT TERM

MID-LONG TERM

LONG TERM

Offers Enhanced Placement and Safety



The Micro Seldinger Technique (MST) insertion kit offers enhanced placement and safety. An echogenic-tipped needle provides enhanced visibility during ultrasound guided placement, whilst the locking sheath dilator gives smooth transition, minimising vessel trauma during insertion. The Vygon MST kit comes with an anti-kink nitinol guidewire for accurate atraumatic positioning.

Features and Benefits

- Vygon safety Seldinger needle**
provides ultimate protection from needlestick injuries
- Echogenic tipped needle**
provides improved visibility for ultrasound placement
- Smooth transition from dilator to introducer**
minimises trauma to vessel
- Nitinol guidewire**
provides accurate atraumatic positioning and eliminates any risk of kinking
- Locking collar between sheath and dilator**
eliminates sheath and dilator separation during insertion

Ordering Information

Vygon Code	NPC Code	Safety Needle Length (cm)	Sheath Dilator Length (cm)	Gauge Size (Fr)	Wing Colour
G1146-530	FSY251	5	7	3.0	Blue
G1146-540	FSY252	5	7	4.0	Red
G1146-550	FSY253	5	7	5.0	Grey
G1146-037	FSY247	7	7	3.0	Blue
G1146-047	FSY246	7	7	4.0	Red
G1146-457	FSY248	7	7	4.5	Yellow
G1146-057	FSY242	7	7	5.0	Grey
G1146-557	FSY249	7	7	5.5	Pink
G1146-04	FSY240	7	10	4.0	Red
G1146-05	FSY239	7	10	5.0	Grey
G1146-06	-	7	10	6.0	Blue

Ultrasound Probe Cover & Gel

SHORT TERM

MID-LONG TERM

LONG TERM

When Precision and Sterility are Important



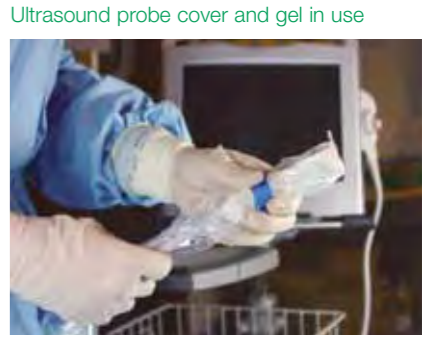
National Institute for Clinical Excellence
 “Two-dimensional (2-D) imaging ultrasound guidance is recommended as the preferred method for insertion of central venous catheters (CVCs) into the internal jugular vein (IJV) in adults and children in elective situations.”⁽¹⁾

Features and Benefits

- Designed to fit most ultrasound probes**
universal application
- All components you need in one convenient pack**
reduced set-up time and cost-effective
- Extends to cover the ultrasound cable**
maintaining a sterile environment and reducing contamination
- Unique fold**
ensuring an easy application
- Latex-free**
safe to use

Kit Contents

- 1 x Ultrasound probe cover (Polyethylene) - code: 1460VC only
- 1 x Ultrasound probe cover (Polyurethane) - code: 2450VC only
- 1 x Ultrasonic transmission gel
- 1 x Latex-free elastic band 1 x Large outer wrap



Ordering Information

Vygon Code	NPC Code	Product Description	Size (cm)	Unit of Sale
1460VC		Ultrasound probe cover and gel (Polyethylene)	15 x 121.9	24
2450VC		Ultrasound probe cover and gel (Polyurethane)	14 x 121.9	24

Ensuring Maximum Sterile Barrier Protection



epic2 2007

"Using maximal sterile barrier precautions during CVAD placement will significantly reduce the risk of infection."⁽⁵⁾

High Impact Intervention No 1: "Preventing the risk of microbial contamination. Aseptic Technique: gowns, gloves and drapes as indicated should be used for the insertion of invasive devices."⁽⁶⁾

Features and Benefits

Standardisation

one pack for CVC line insertions and you can use with the CVC line of your choice.

Reduced set-up time

all components you need in one convenient pack.

Large full body drape

maximum barrier precautions reduce the risk of infection.

Transparent window

allows you to see the patient and landmarks for CVC insertions.

CVC insertion pack in use



Kit Contents

- 1 x Tray
- 1 x Large gown
- 15 x Swabs 7.5 x 7.5cm, 8ply, white
- 1 x Maximum barrier peelable drape with transparent centre aperture 140 x 100cm
- 2 x 10ml Syringes
- 2 x Hand towels
- 1 x Sharps disposal pad
- 1 x ChloroPrep® 3ml applicator
- 1 x Hypodermic needle 21G - 1½"

Ordering Information

Vygon Code	NPC Code	Product Description	Unit of Sale
OP0199686PH	FSQ565	CVC insertion pack	8



Customised CDC Maximum Sterile Barrier Protection Packs provide the option of designing a particular pack to fit with the specific needs of the Clinician.

Please ask your local Sales Executive for more information.

Temporary Central Venous Catheter



Vygon offers one standard set of components with six different central venous catheters. You choose the catheter you require...

"My technique was the result of an idea ... Vygon have developed that idea with skill and innovation, resulting in an excellent product which I highly recommend."

Sven-Ivar Seldinger

Features and Benefits

Antimicrobial polyurethane (PUR)

reduces the risk of catheter related infections^(3,4)

Soft thin-walled catheter

maximises flow rate, reduced risk of vessel damage

Wide choice of catheters

enables an accurate match between patient and catheter

Choice of 3, 4 or 5 lumen

allows continuous uninterrupted therapy

Tapered atraumatic tip

reduces risk of vessel trauma

Colour-coded hubs

aid line identification

Secure slide clamps

reduce the risk of accidental air embolus and blood spillage during I.V. line changes

Flexible 'J' guidewire with advancer system

aids insertion & reduces the risk of vessel trauma

X-ray opaque catheter

for confident tip positioning

Latex-free injection membranes

for convenience and safety

Ordering Information

Product Codes		Product Description	Length (cm)	Size (Fr)	Lumen Gauge					Flow Rate (ml/min)					Unit of Sale
Vygon	NPC				Prox.	Med.1	Med.2	Med.3	Dist.	Prox.	Med.1	Med.2	Med.3	Dist.	
8155.167	FYV022	Triple lumen	16	7.5	18	18	-	-	14	36	34	-	-	63	5
8155.207	FYV015	Triple lumen	20	7.5	18	18	-	-	14	30	30	-	-	60	5
8158.167	FYV023	Quad lumen	16	8.5	18	14	18	-	16	22	95	22	-	55	5
8158.207	FYV024	Quad lumen	20	8.5	18	14	18	-	16	20	90	20	-	50	5
8159.167	FSU144	Quin lumen	16	9.5	18	14	18	18	16	20	99	16	21	60	5
8159.207	FSU145	Quin lumen	20	9.5	18	14	18	18	16	17	89	12	18	55	5

Product and Technical Support

Vygon education & training materials are available for loan, and can be obtained via your local Sales Executive or through our Customer Services team. If you are looking to extend the skills of individual members of your team, Vygon are able to run small I.V. workshops which are tailor-made to meet individual needs and expectations.



Arin Apron has been designed to assist in the training of patients in the care and maintenance of their cuffed catheter.



Chester Chest is a useful training aid to enable staff to practice catheter care and maintenance skills on a wide range of vascular access devices including: PICC lines, cuffed catheters and implantable ports.



Peter PICC provides a life-like opportunity for PICC placement in the safety of the classroom. It is used extensively during both our PICC and Midline workshops.

The following items are also available as part of our on-going commitment to Education & Training:

Product specific workshops

Small I.V. workshops which are tailor-made to meet individual needs and expectations. They are classroom based and combine lectures with “hands-on” opportunities, using videos, slides and training mannequins.

An introduction to PICC placement workshop

A personalised three hour workshop designed to extend the skills of existing I.V. practitioners, combining the theory and practical elements involved in PICC placement.

“Hands on” training aids

These aids enable patients and clinicians to practice their catheter care and maintenance skills. They are available for workshops or loan.

Policies and Procedures

A short ‘hands-on’ workshop which can be run at a departmental level and is suitable for anyone involved in the care, repair and maintenance of cuffed catheters.

We provide continual product support for healthcare professionals by offering mutually convenient complementary training and technical support. The following videos, CD-ROMs, manuals, booklets and leaflets are available.

Ordering Information

Vygon Code	Description
Videos	
0041.PICC	Lifecath PICC Insertion Video (35mins)
0041.SC	A Guide to Subclavian Catheterisation (15mins)
CD-ROMs	
0043.BIO/CD	Biovalve CD-ROM
0041.PICC/CDROM	Lifecath PICC Insertion
0039.L-TWIN/CD	Lifecath Twin Insertion
Manuals & Booklets	
0039.VA/MANUAL	Mid to Long Term Vascular Access Education and Training Manual Section 1: Catheter Selection & Placement Section 2: Catheter Care & Maintenance Section 3: Reducing the Risk of Catheter Related Infection
0043.I.V/CANN	Biovalve - A Pocket Guide
PS059	Caring for Sitimplant
PS060	Paediatric: You & Your Port
PS032	Caring for Leaderflex - Patient Information
PS054	Caring for your PICC Line - Patient Information
PS075	Lifecath - Patient Information
PS012	A Patient Guide to Using Bionector

References

- Pearson M. L.**, Hospital Control Practices Advisory Committee. (1996) Guideline for prevention of intravascular-device-related infection. *Infection Control and Hospital Epidemiology*, Vol 17, No 7 (July) pp.438-473.
- Fletcher S. J. , Bodenham AR.** (1999) Catheter-related sepsis: an overview – Part 1. *British Journal of Intensive Care*, Vol 9, No 2. pp.46-53.
- Wickham R., Purl S., Welker D.** (1994) Long term central venous catheters. *Meditheses*, Vol 1, No 2 (Nov).
- Khare, et al.** (2004) Are silver-impregnated central vascular catheters superior to non-impregnated catheters? *44th annual interscience conference on antimicrobial agents and chemotherapy, Washington DC*, pp.356, K-1320.
- Pratt R. J., et al.** (2007) epic2: National evidence-based guidelines for preventing healthcare-associated infections in NHS hospitals in England. *Journal of Hospital Infection*. 65S, S33.
- (2005) Saving Lives: A delivery programme to reduce Healthcare Associated Infection including MRSA. High Impact Intervention No.1. Preventing the risk of microbial contamination. *Department of Health*.
- (September 2002) Guidance on the use of ultrasound locating devices for placing central venous catheters. NICE Technology Appraisal Guidance No.49, *National Institute for Clinical Excellence*.

This brochure has been printed using environmentally-friendly processes, on paper from well-managed sources, and can be recycled. If you would like to receive an electronic copy, please contact the Vygon Customer Services team on 01285 657051.



ISO 14001
Produced at a mill that holds
ISO 14001 certification



Vygon (UK) Ltd

Web: www.vygon.co.uk

Email: vygon@vygon.co.uk

