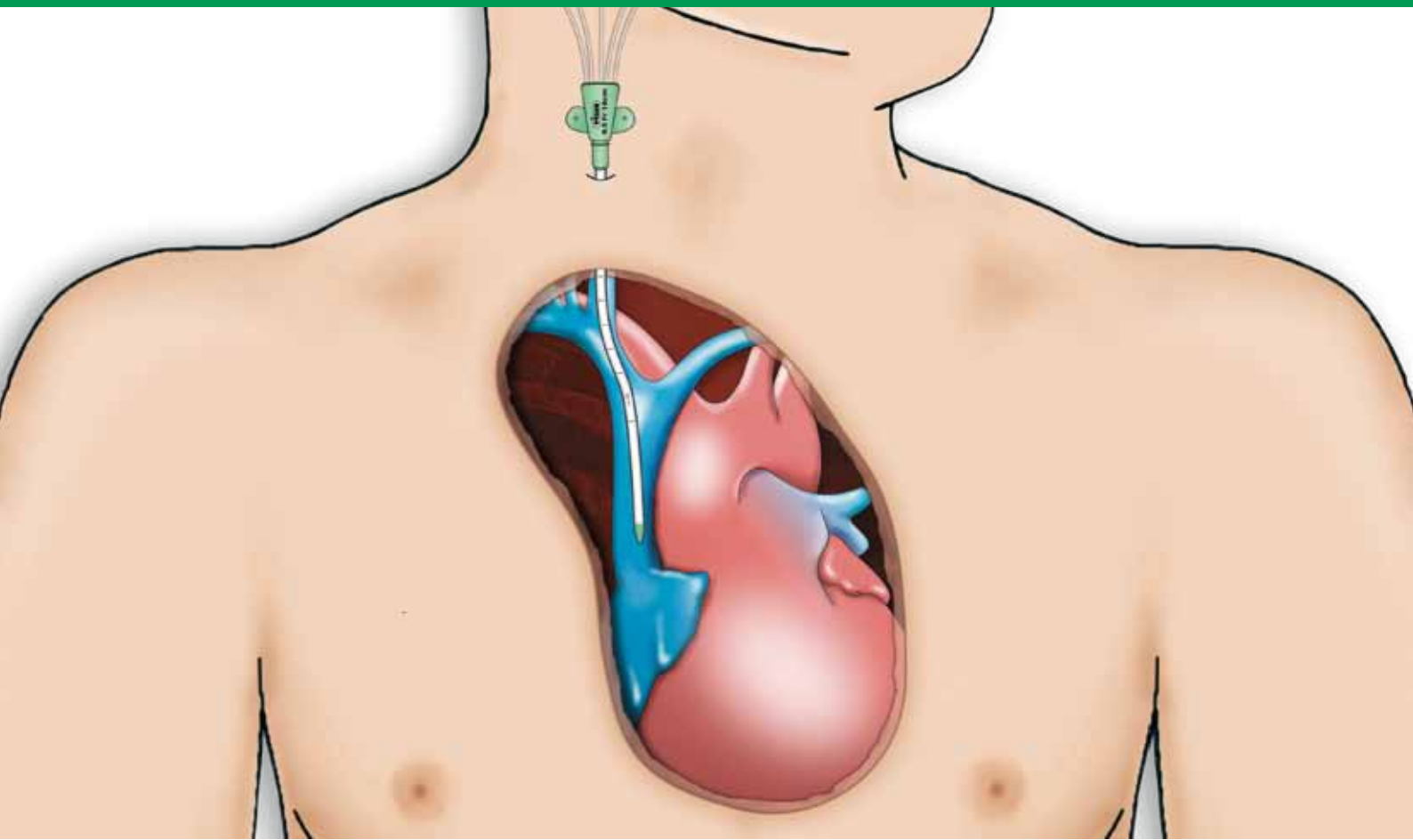




Multicath Forward Catheters

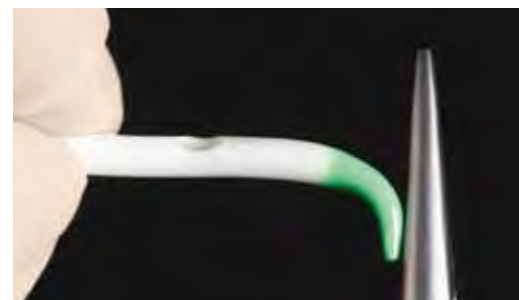
Integrated product solutions for short-term central venous access



Depth markings



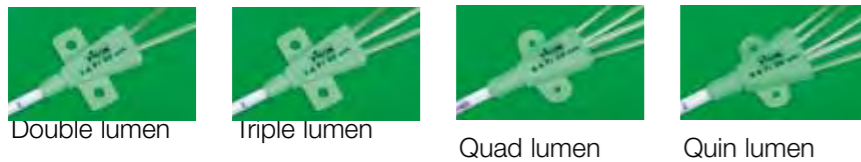
Thumb feed guidewire



Flexible atraumatic tip

Product Information

Multicath Forward



Features and benefits

Soft, thin wall catheter

Firm during insertion, which aids this process, and soft at body temperature, which maximises flow rate and patient comfort

Depth marked catheter

Aids accurate placement of the catheter tip

Secondary fixation device

Allows fixation of the catheter at the entry site for extra security

Soft flexible atraumatic tip

Reduces the risk of vessel damage

X-ray opaque catheter

For accurate tip location

Choice of length - to match clinician's needs

For optimal tip placement

Flexible 'J' guidewire in thumb feeder

For a smooth advancement of the guidewire

Secure slide clamps

For easy line management reducing risk of air embolism and blood loss

Kit contents

- 1 x Multicath radiopaque polyurethane catheter
- 1 x Mosquito introducer cannula 18G x 64mm
- 1 x 'J' guidewire in thumb feeder, length 60cm, OD 0.9mm
- 1 x Introducer needle 18G x 70mm
- 1 x Vessel dilator
- 1 x Mini scalpel No.11
- 1 x 5ml luer slip syringe
- 1 x Secondary fixation wing and anchor
- Latex-free injection membranes

Ordering information

Vygon code	NPC code	Catheters (PUR)				Flow rate (ml/min) / Priming volume (ml)					Catheter lumen gauge					Unit of sale
		Length (cm)	Lumen	Fr	OD (mm)	Dist.	Med 1.	Med 2.	Med 3.	Prox.	Dist.	Med 1.	Med 2.	Med 3.	Prox.	
0159.167	FSU232	16.0	Quin	9.5	3.15	57 / 0.43	84 / 0.57	15 / 0.36	16 / 0.36	18 / 0.42	16	14	18	18	18	10
0159.207	FSU233	20.0	Quin	9.5	3.15	55 / 0.47	80 / 0.60	15 / 0.39	12 / 0.38	17 / 0.43	16	14	18	18	18	10
0158.125	N/A	12.5	Quad	8.5	2.80	74 / 0.45	123 / 0.60	29 / 0.39	N/A	30 / 0.36	16	14	18	-	18	10
0158.167	FSU142	16.0	Quad	8.5	2.80	61 / 0.38	100 / 0.49	17 / 0.29	N/A	22 / 0.33	16	14	18	-	18	10
0158.207	FSU143	20.0	Quad	8.5	2.80	56 / 0.38	100 / 0.54	15 / 0.53	N/A	14 / 0.36	16	14	18	-	18	10
0155.167	FSU140	16.0	Triple	7.5	2.70	63 / 0.38	34 / 0.33	N/A	N/A	36 / 0.38	14	18	-	-	18	10
0155.207	FSU141	20.0	Triple	7.5	2.70	60 / 0.45	30 / 0.34	N/A	N/A	30 / 0.36	14	18	-	-	18	10
0157.167	N/A	16.0	Double	7.5	2.50	56 / 0.48	N/A	N/A	N/A	52 / 0.56	16	-	-	-	18	10
0157.207	N/A	20.0	Double	7.5	2.50	47 / 0.39	N/A	N/A	N/A	42 / 0.40	16	-	-	-	18	10

Product Information

Ultrasound probe cover and gel



Features and benefits

All the components you need in one convenient pack

Reduced set-up time

Extends to cover the ultrasound cable maintaining a sterile environment

Reducing contamination

Unique fold

Ensuring an easy application

Off-centred seam

Allows clear visualisation of the site and better contact

Soft PUR cover (code: 2450VC)

For easy smooth contact with the skin and in use

National Institute for Clinical Excellence

"Two-dimensional (2-D) imaging ultrasound guidance is recommended as the preferred method for insertion of central venous catheters (CVCs) into the internal jugular vein (IJV) in adults and children in elective situations."⁽¹⁾

Kit contents

- 1 x High quality polythene film, length 150cm, tip width 10cm
- 1 x Ultrasonic transmission gel
- 1 x Large outer wrap
- 2 x Fixing tapes
- 1 x Latex-free elastic band

Ordering information

Vygon code	NPC code	Product description	Unit of sale
80.199.541	FBE052	Ultrasound probe cover (PE) and gel	50
1460VC	N/A	Ultrasound cover (PE)	24
2450VC	N/A	Ultrasound cover (PUR)	24



Product Information

CDC insertion pack



epic2 2007

“Using maximal sterile barrier precautions during CVAD placement will significantly reduce the risk of infection.”⁽²⁾

High Impact Intervention No 1: “Preventing the risk of microbial contamination. Aseptic Technique: gowns, gloves and drapes as indicated should be used for the insertion of invasive devices.”⁽³⁾

Kit contents

- 1 x Tray
- 1 x Large gown
- 2 x Gallipots
- 15 x Swabs 7.5 x 7.5cm, 8 ply, white
- 1 x Hypodermic needle 21G
- 2 x Sponge sticks
- 1 x Maximum barrier drape with transparent centre, aperture 140 x 100cm
- 2 x 10ml syringes
- 2 x Hand towels
- 1 x Sharps disposal pad

Ordering information

Vygon code	NPC code	Product description	Unit of sale
96930191	FSQ565	CDC maximum sterile barrier protection pack	8



Customised CDC maximum sterile barrier protection packs provide the option of designing a particular pack to fit with the specific needs of the clinician.

Please ask your local Sales Executive for more information.

Features and benefits

Standardisation

One pack for CVC insertions
Use with the CVC of your choice

Convenient pack

All the components you need in one convenient pack, reducing set-up time

Maximum barrier drape

Maximum barrier precautions reduce the risk of infection and easy use of ultrasound

Allows you to see the patient and landmarks for CVC insertions

Large absorbent field ensures bodily fluids stay within the area, reducing contamination risk

Adhesive aperture secures the drape to the patient during an insertion of a CVC



Product Information

Custom CVC insertion packs



Features and benefits

Reduced set up time

All the components you need in one convenient pack

Reducing the risk of infection

The use of aseptic technique when inserting central venous catheters can reduce the risk of bacterial contamination to the patient, as outlined in High Impact Intervention No.1⁽³⁾

All the components available in Vygon's customised procedure packs have been specifically selected for their high quality

Standardisation of components

Universal pack ensuring maximum sterile barrier protection⁽²⁾

Saving time and money

Decrease waste, ordering costs and packaging

Customisation provides you with the ability to tailor-make a pack specific to your requirements, whilst also providing a maximum sterile barrier, therefore reducing the associated risk of infection to the patient.^(2,3)

With the ever-increasing demand to improve the efficiency of hospitals and utilise available time, custom packs help by reducing the stock items required for the procedure, thereby decreasing waste, ordering costs and packaging. This in turn reduces set-up time, allowing skilled clinicians more time for hands-on care.

Example of pack components available

- Multicath CVC
- Drapes
- Gown
- Ultrasound probe cover & gel
- Swabs
- Yellow disposal pad
- Sharps pad
- Bionector
- Syringes
- Hypodermic needle
- Ancillary items
- ChloroPrep®



Please ask your local Sales Executive for more information.

Reference

1. (September 2002) Guidance on the use of ultrasound locating devices for placing central venous catheters. *NICE Technology Appraisal Guidance No.49, National Institute for Clinical Excellence.*
2. **Pratt R. J., et al.** (2007) epic2: National evidence-based guidelines for preventing healthcare-associated infections in NHS hospitals in England. *Journal of Hospital Infection.* **65S**, S33.
3. (2005) Saving Lives: A delivery programme to reduce Healthcare Associated Infection including MRSA. High Impact Intervention No.1. Preventing the risk of microbial contamination. *Department of Health.*



Vygon (UK) Ltd

Web: www.vygon.co.uk

Email: vygon@vygon.co.uk



ISO 14001
Produced at a mill that holds
ISO 14001 certification

This brochure has been printed using environmentally-friendly processes, on paper from well-managed sources, and can be recycled. If you would like to receive an electronic copy, please contact the Vygon Customer Services team on 01285 657051.



0012.MULTI/C - Content correct as of 02/2010